



TOPDESIGN

FOR IRON, ALUMINIUM & GLASS



COMPANY PROFILE

شركة توب ديزاين
للحديد و الألمنيوم و الزجاج

www.topdesign.ae



TOP DESIGN is Group of Companies and established in 9th March, 2005 and now operating under efficient management team.

Our Mission to and are determined to become one of the leaders in steel works, aluminum works, and glass works Company preferred by Clients, Projects Managers and Consultants of the Gulf and MENA Regions:

- ▶ To attain total professionalism
- ▶ To strive & sustain Total Quality Management (TQM) system
- ▶ To sustain & enlarge the list of fully satisfied clients with zero complaints

TOP DESIGN are working as a Main Contractor doing General contracting and Transportation specialized in Infrastructural activities and undertake contracts providing END to END solutions.

Our presence in all over UAE and specially in Abu Dhabi, Al Ain regions and specialized in providing elegant and economical solutions and cost-effective solutions for setting up the facilities by paying attention to detail and adhering to high professional standards. We offer you a variety of services like all kinds of steel design works, aluminum frame and frame less works and all kind of glass designs and glass works.

We aim to establish a close working relationship with all our associates by fully understanding the requirement of each particular project and provide a responsive and inventive design service that fully respects the clients' budget, quality and timeframe.

We maintain a strong reputation for providing cost effective solutions. We shall be more than glad to be associated with your reputed organization and work together. We seek your valued inquiries to enable us to quote and participate in the forthcoming tenders and/or inquiries.

Thanking you and assuring you of prompt services and personalized attention at all times.

► Mission Statement

To accomplish the goals of all our clients and business associates rendering excellent services in a professional manner as comrades.

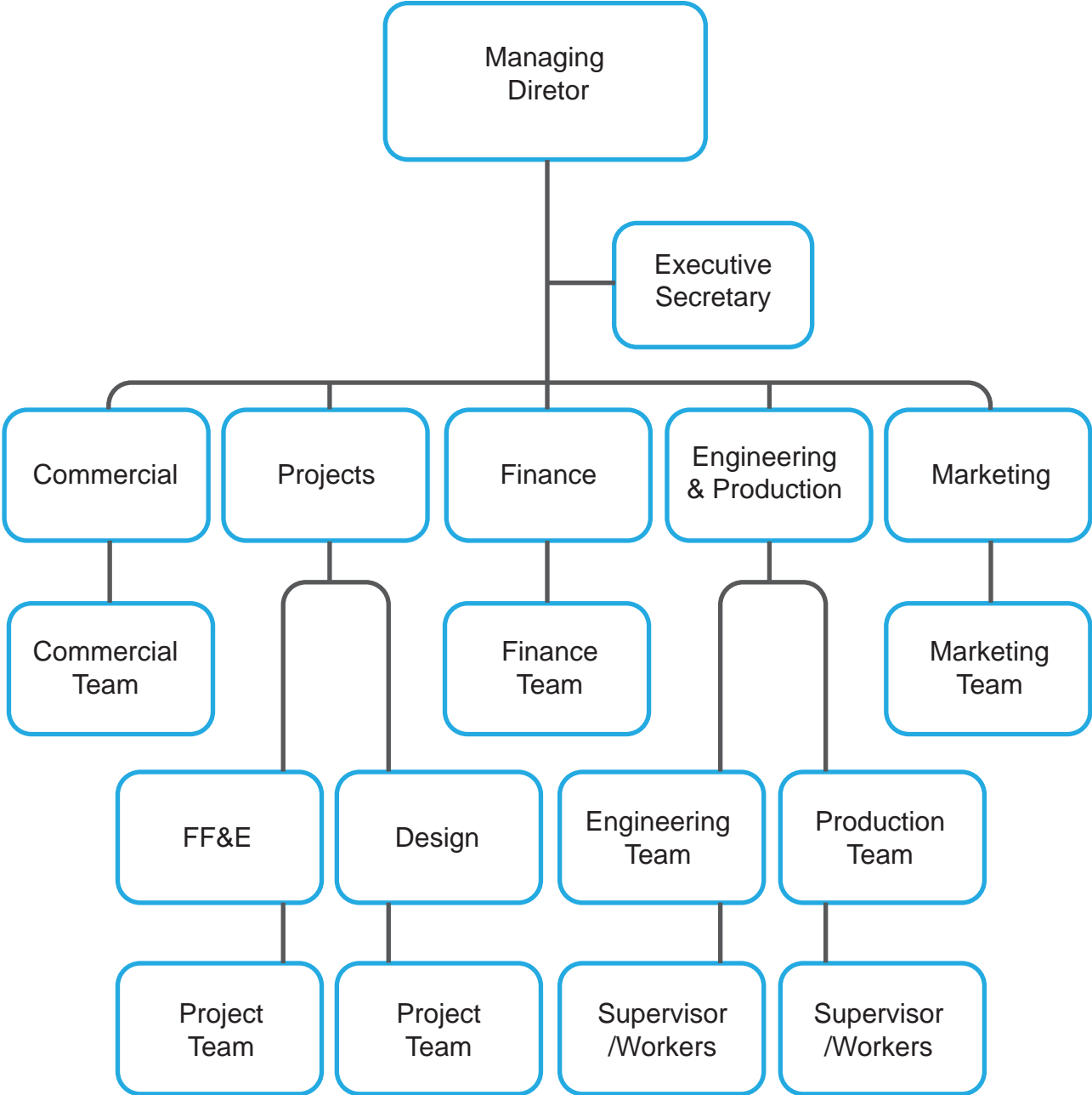
► Vision Statement

To establish a proven track record for TOP DESIGN in terms of resources and capacities for handling sizable contracts thus deservingly capture an appropriate share in the development of the region, adopting ethical business practices.

PROVIDING ELEGANT
& ECONOMICAL SOLUTIONS



TOP DESIGN FOR STEEL, ALUMINIUM & GLASS
ORGANISATION STRUCTURE



**COMPLETED PROJECTS BY
TOP DESIGN FOR STEEL ALUMINUM AND GLASS**

الاستشارى	المقاول	المشروع	إسم المالك	
مكتب الحصن للاستشارات الهندسية	بنيان الامارات للتعمير والانشاء	فيلا	جمعة سلطان الظاهرى	1
فراس للاستشارات الهندسية	بنيان الامارات للتعمير والانشاء	فيلا	عبدالله حمد سلم السالمى	2
مباشر من المالك		فيلا	حمود نازع سعيد	3
البحرى للاستشارات الهندسية	مؤسسة العنديل للمقاولات العامة	فيلا	حميد ابراهيم الاحمد	4
مركز النشمى للاستشارات الهندسية	البرج اللامع للمقاولات	فيلا	خالد عبيد جمعة بخيت الكعبى	5
برايم للاستشارات الهندسية	نجوم الشام للمقاولات	فيلا	خميس حميد الخال الدرمدى	6
غرناطة للاستشارات الهندسية	مؤسسة ابو هشام للمقاولات	فيلا	خميس مرهون محمد سيف	7
مباشر من المالك		فيلا	دكتور راشد على محمد النعيمى	8
الفا بيتا للاستشارات الهندسية	ريف التل للمقاولات العامة	فيلا	مصباح غريب سعيد العزيزى	9
هندسة الابداع للاستشارات الهندسية	داماك للمقاولات العامة	فيلا	سالم خميس مسلم الشمسى	10
سفير الاستشارات الهندسية	القدرات الهندسية للمقاولات العامة	مول تجارى	جبال البادية للصيانة العامة	11
	الموناليزا للمقاولات العامة	فيلا	عبدالله صالح التميمى	12
اركال للاستشارات الهندسية	العائلة للمقاولات العامة	بناية	نادى تراث الامارات	13
مباشر من المالك		فيلا	خالد خميس الشمسى	14
مباشر من المالك		مسجد	خالد خميس الشمسى	15
ديماس للاستشارات الهندسية	دماس تك للمقاولات والصيانة العامة	فيلا	خليفة عبد الرحمن النيدادى	16
هندسة الابداع للاستشارات الهندسية	مؤسسة اورنتش للمقاولات العامة	فيلا	سالم متعب سهيل حمد العامرى	17
ديماس للاستشارات الهندسية	الامارات لاين للمقاولات والصيانة العامة	فيلا	سعود النيدادى	18
برايم للاستشارات الهندسية المعمارية	نجوم الشام للمقاولات	فيلا	سعيد عبيد حميد هلال الكعبى	19
الساحل للاستشارات الهندسية		فيلا	محمد الكسبرى	20
	مؤسسة داماك للمقاولات العامة	فيلا	نجيب محمد	21
البيت العتيق للاستشارات الهندسية	مؤسسى تركومانى للمقاولات العامة	فيلا	على سيف حمد سليمان العامرى	22
مكتب الحصن للاستشارات الهندسية	بنيان الامارات للتعمير والانشاء	فيلا	على سعيد خلفان الشمسى	23
	الثقة الممتازة للمقاولات والصيانة العامة	مسجد	حكومة ابو ظبى-سيف مصباح حمودة الكتبى	24
مباشر من المالك		فيلا	على ابو ظبى	25
أجيد للإستارات الهندسية	داماك للمقاولات العامة	فيلا	سالم سليم سالم العفاري	26
اركال للاستشارات الهندسية	القدرات الهندسية للمقاولات العامة	فيلا	مزه صالغ على الحرير الكردى	27
	مشاريع الامارات الدولية للمقاولات	فيلا	ناصر فرج سالم التميمى	28
	الانماء الهندسية	فيلا	سالم جمعة	29

COMPLETED PROJECTS BY TOP DESIGN FOR STEEL ALUMINUM AND GLASS

اسم المقاول	
GLASS CO LLC	35
MONTE CARLO	36
AL SHAM DECORE	37
AL AFANDI GLOBAL	38
AL SAHER	39
MATREX ALUMINIUM	40
VERTEX ALUMINIUM	41
ERTIFA ALUMINIUM	42
PARAGON ALUMINIUM	43
AL JAHLI MARBLES	44
AREZ AL JABAL	45
FALCON VILLAGE	46
مؤسسة مدينة الاوائل للحداثة و اللحام	47
EMIRATES FALCON	48
AL RAHEB EL ZAHRI	49
INITED ENGINEERING CO	50
MANNA METAL	51
BANAFSIC LINE	52
ICON	53
BAB AL KHALEEJ	54
SAFRON	55
SABRA ALUMINIUM	56
HARMONY STYLE DECORE	57
JAMNA ALUMINIUM	58
WAHAT ELNILE	59
NAGEM AL KHAIR	60
OCEAN CITY TRANS	61
WADI ASHAREJ	62
ANWAR HUSSIAN STEEL	63
AL CORE STEEL	64
AL REEF ALUM	65
HOME SQUARE	66
ASIAN STAR	67
ALU TECH	68

اسم المقاول	
توب ديزاين للحديد والالمنيوم والزجاج - فرع الحديد	1
توب ديزاين للحديد والالمنيوم والزجاج - فرع الالمنيوم	2
BRUSSELS	3
MHD ELKHOLY	4
AL FIRDOUS	5
FUTURE TECH	6
AL KHAREEF	7
LAROSA ALUMINIUM	8
WHITE HOUSE	9
Platin Aluminium & Glass WorkShop	10
HIGH CLASS	11
AL SARYAH ALUMINIUM	12
MOSAB AL HOMSI	13
BAHAR AL YAMAMA	14
BAB AL SALAM	15
NEW CAPITAL	16
PREMIUM YAMAMA	17
LAMAR ALUMINIUM	18
شركة المنامة للمقاولات العامة	19
NORTHERN STAR ALUMINIUM AND GLASS EST	20
DIAMOND ALUMINIUM	21
QAF CLOSET	22
ورشة الهدير للالمنيوم و الزجاج	23
LONDON ALUM	24
Technical System Cont. & Gen. Maint	25
TOP QUALITY	26
مؤسسة الحمصي للالمنيوم و الزجاج	27
JAWHRET AL JANOOB	28
RED LINE ALUMINIUM	29
MEYAAR ALUMINIUM	30
AL BAZELT	31
FUTURE HOUSE	32
Arabian Aluminum & Carpentry Factory LLC	33
BRIGHT STAR	34

ALUMINIUM AND GLASS



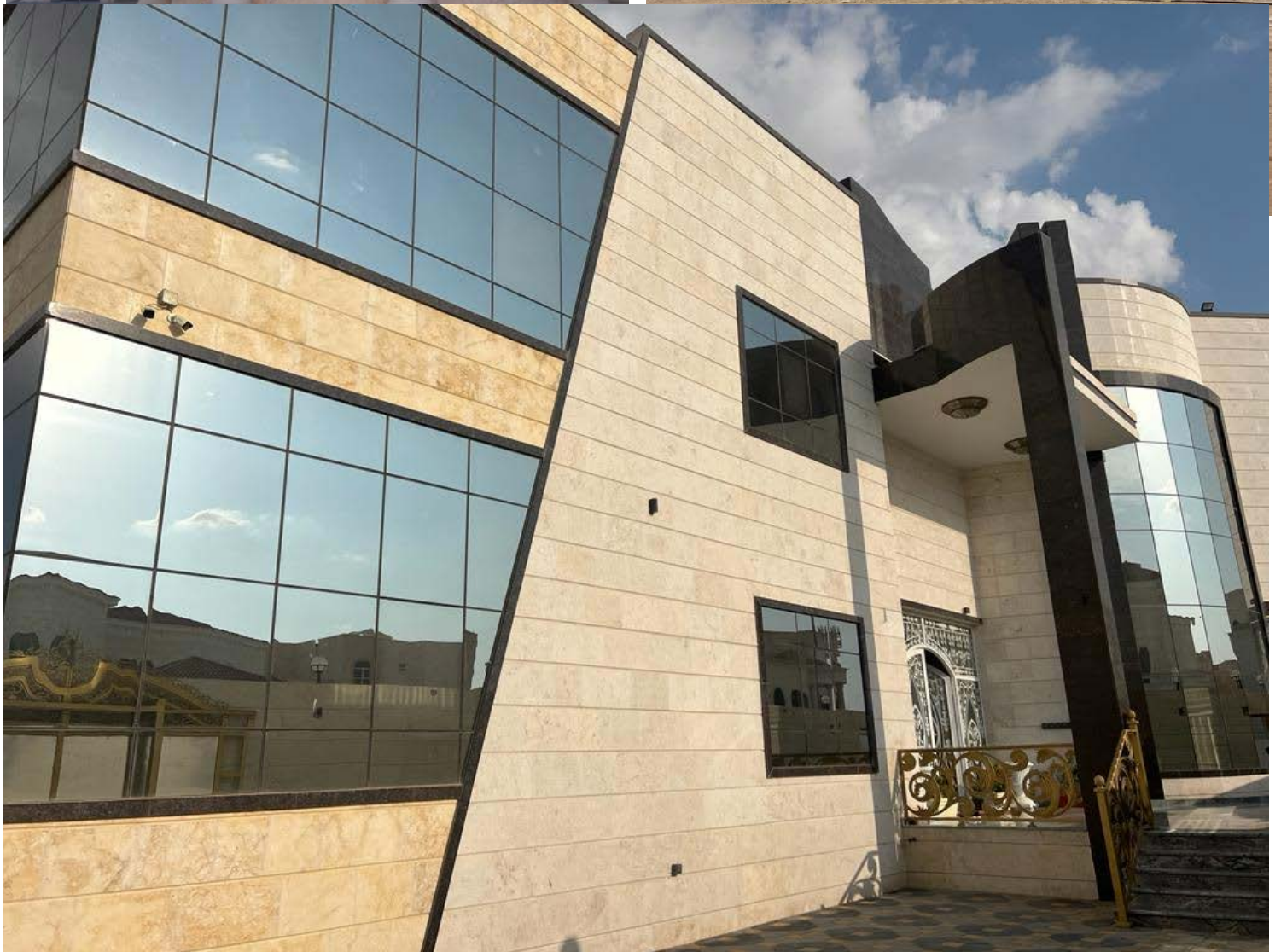
ALUMINIUM AND GLASS



ALUMINIUM AND GLASS



ALUMINIUM AND GLASS



ALUMINIUM AND GLASS



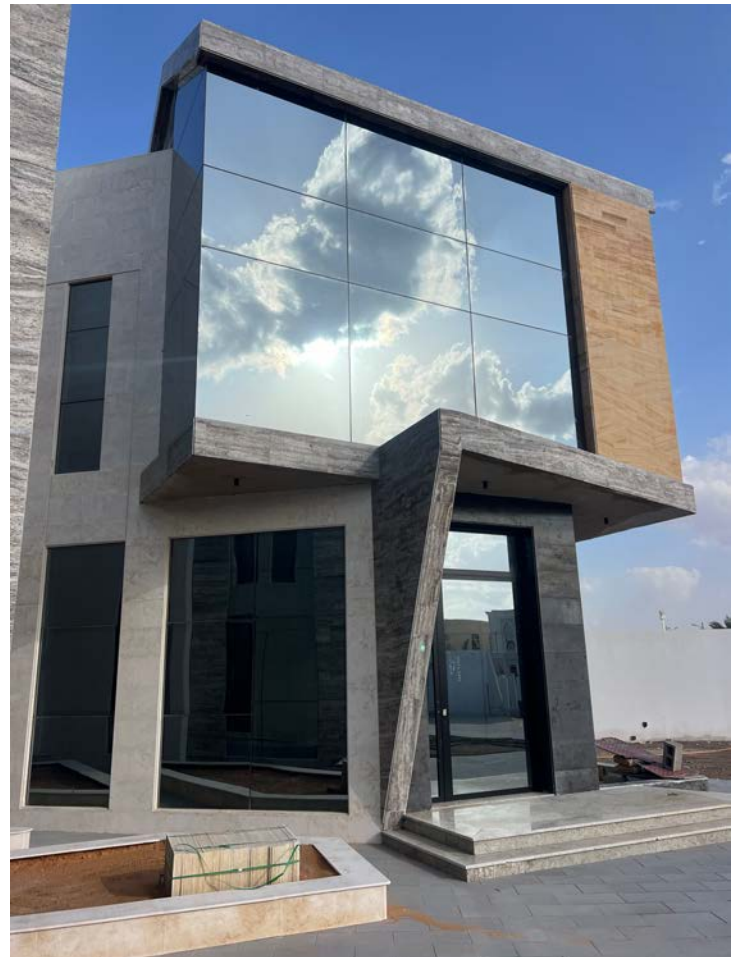
ALUMINIUM AND GLASS



www.topdesign.ae

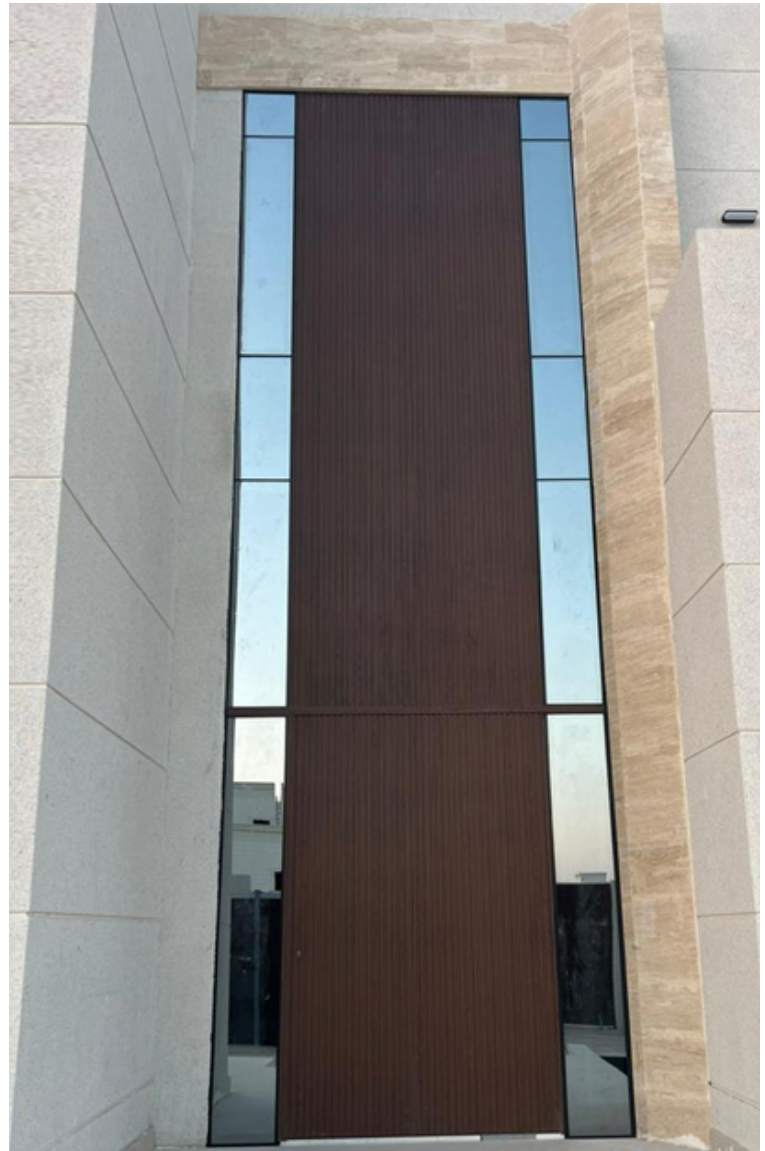


ALUMINIUM AND GLASS



ALUMINIUM PIVOT DOORS





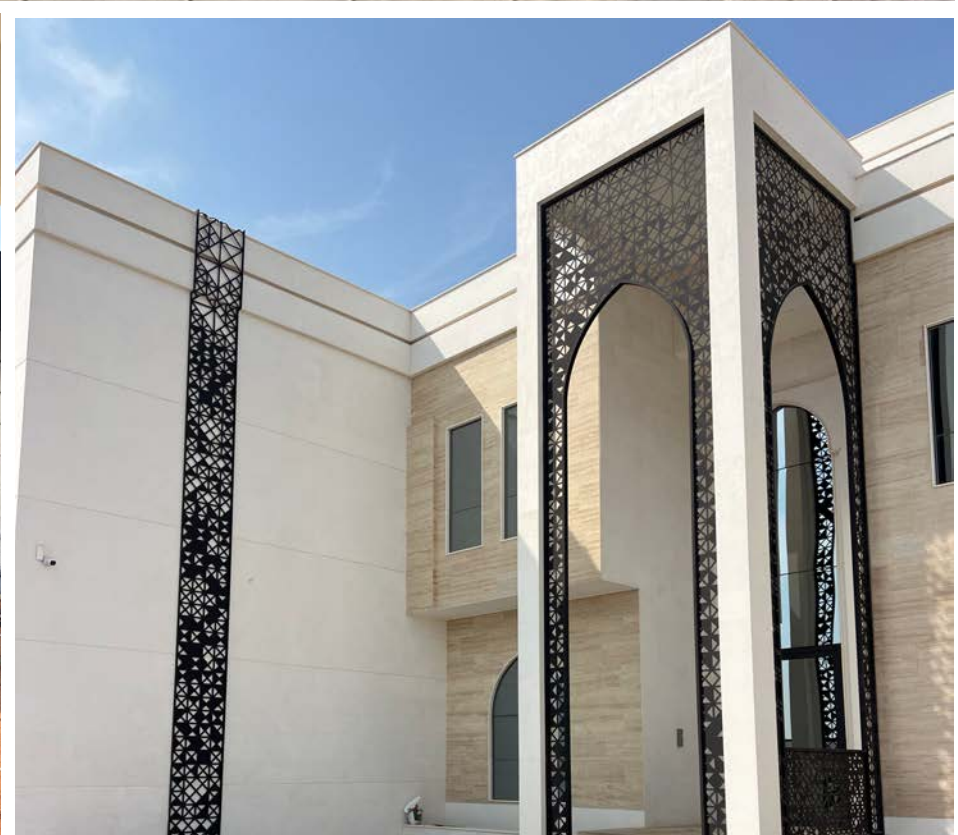


pergola

STEEL CAR SHEAD



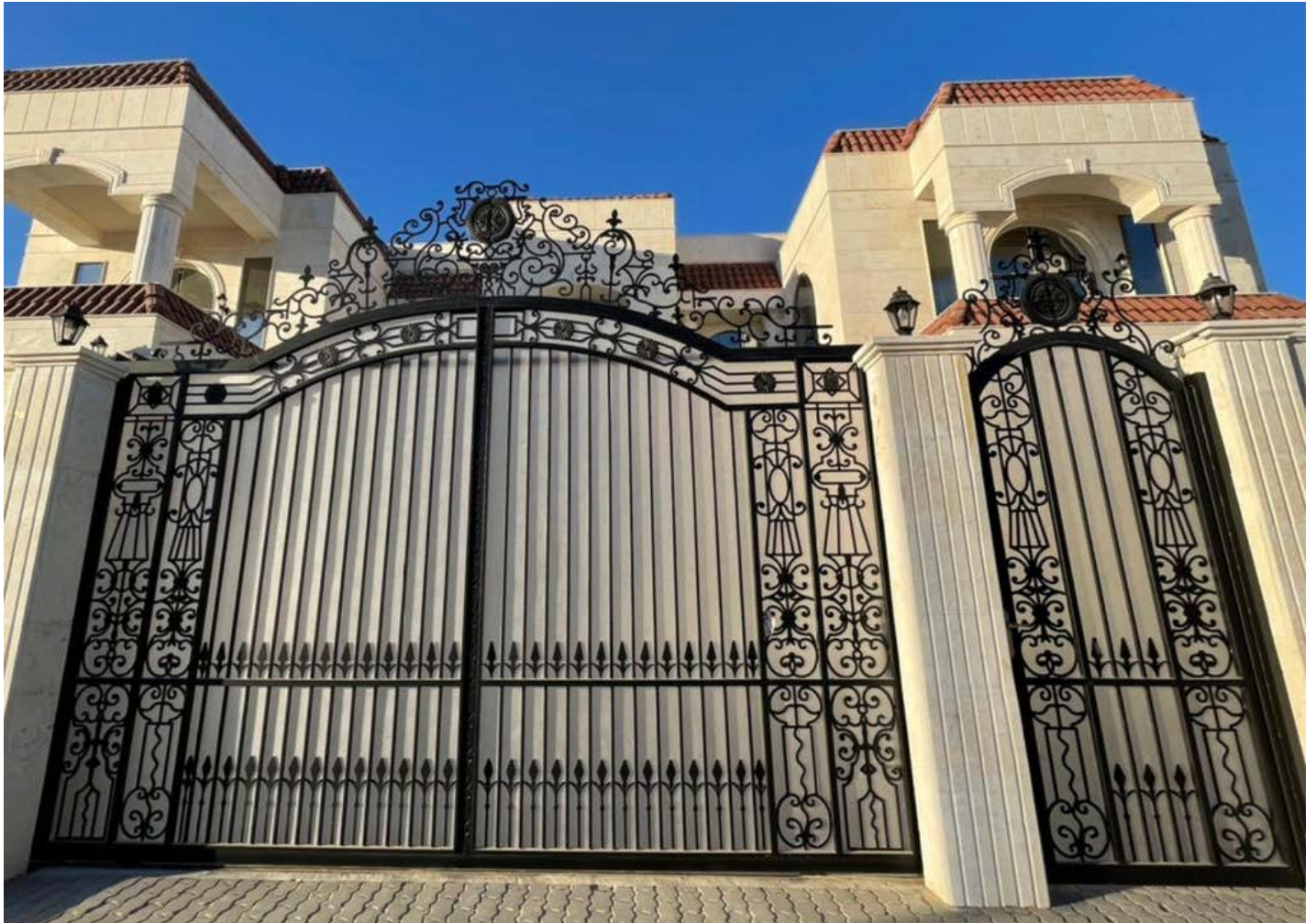
Steel Work Shop



(GATES)









www.topdesign.ae



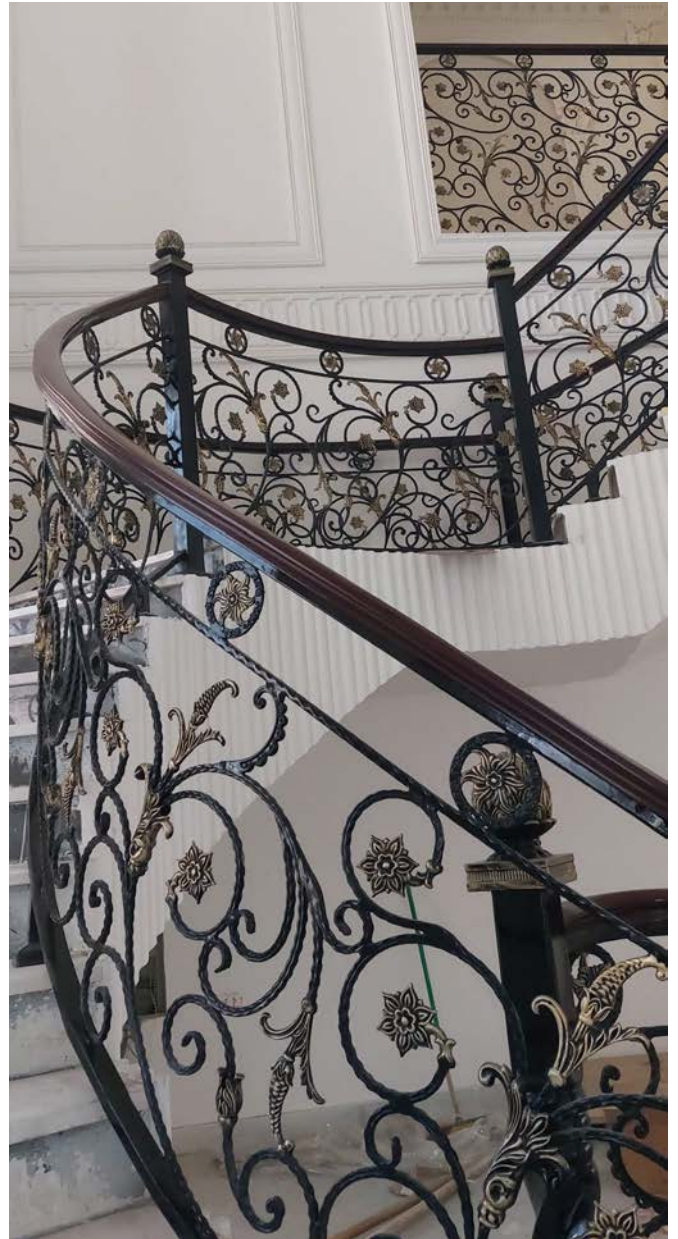
www.topdesign.ae



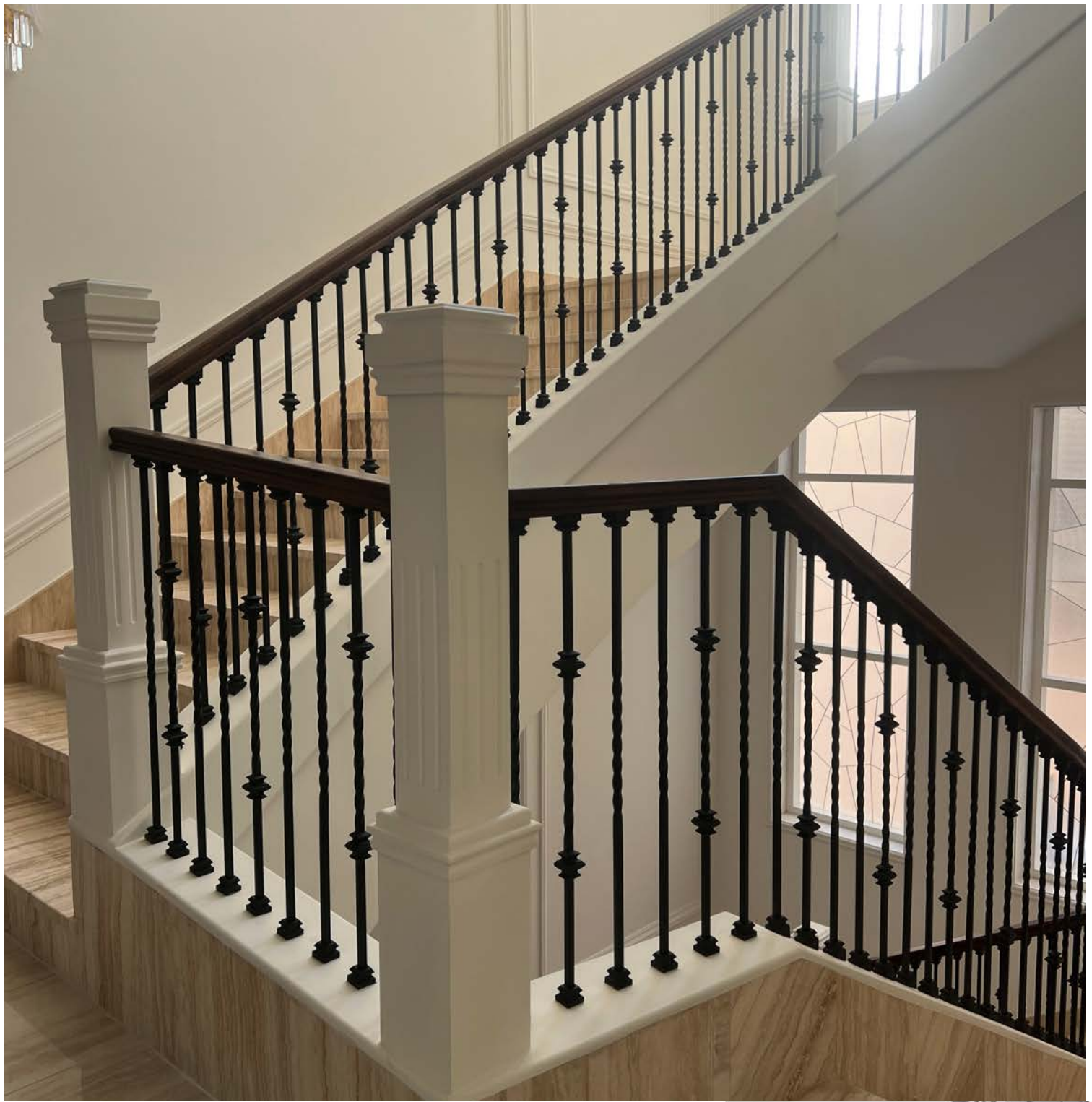




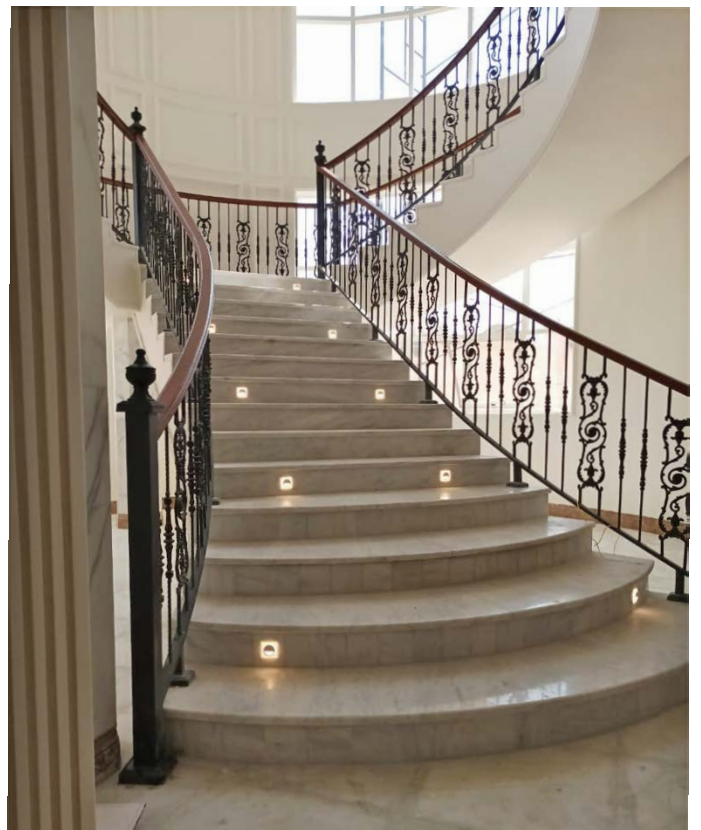
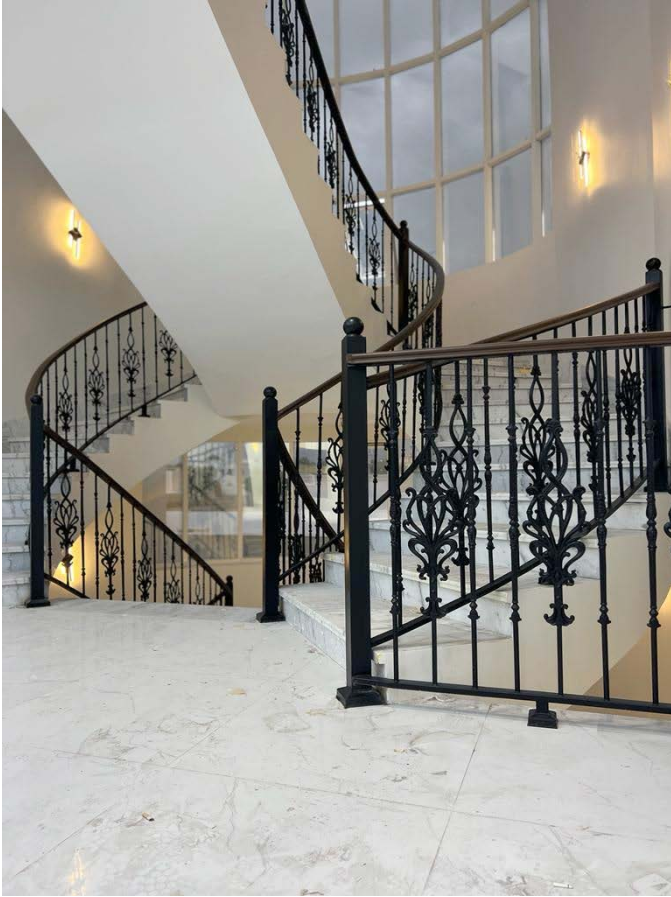
(HANDRAILS)







TOP DESIGN GROUP
IN PHOTOS



STEEL FABRICATION WORKSHOP



STEEL FABRICATION WORKSHOP



STEEL FABRICATION WORKSHOP



GLASS FACTORY



GLASS FACTORY



GLASS FACTORY



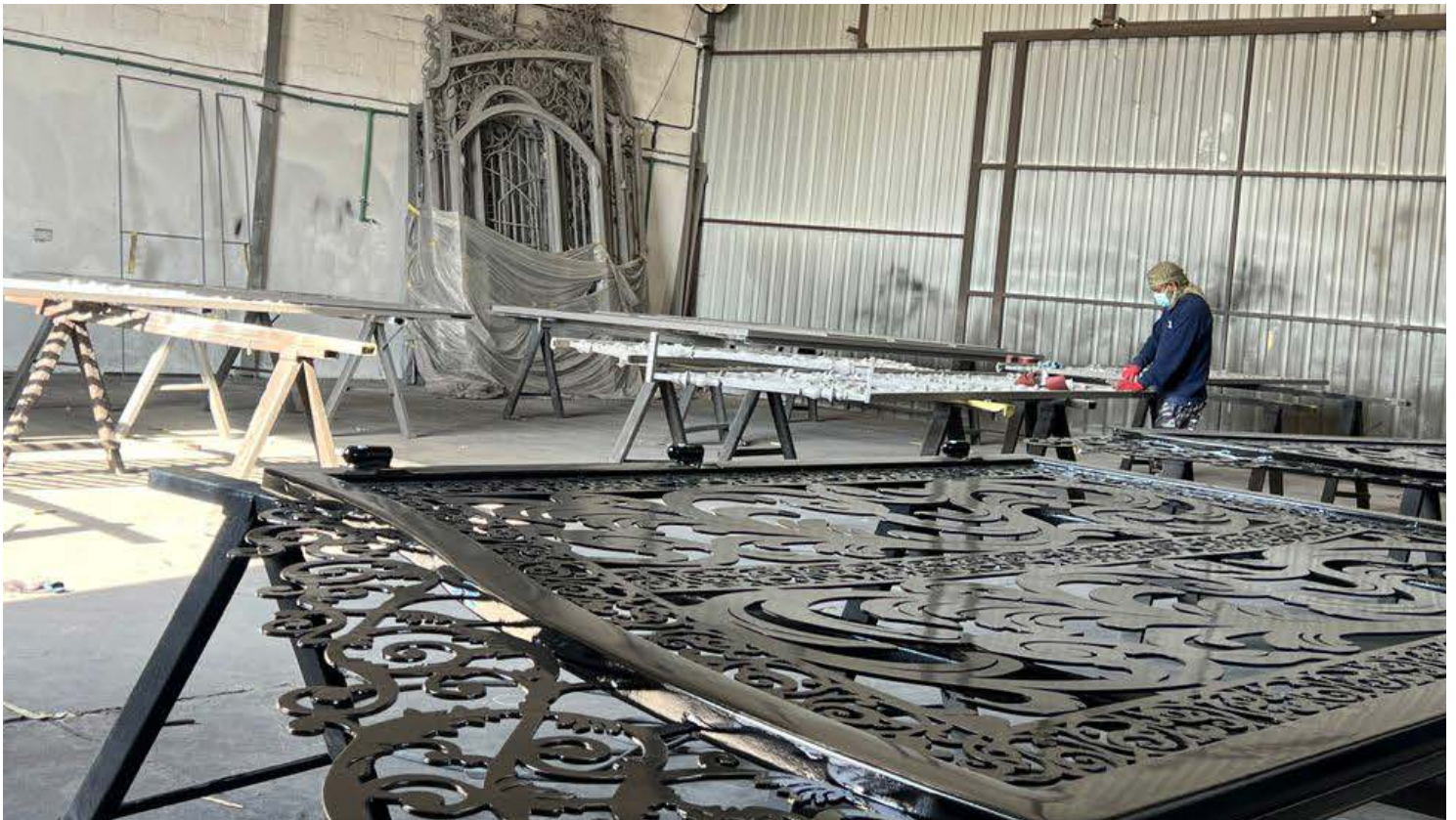
GLASS FACTORY



GLASS FACTORY



GLASS FACTORY



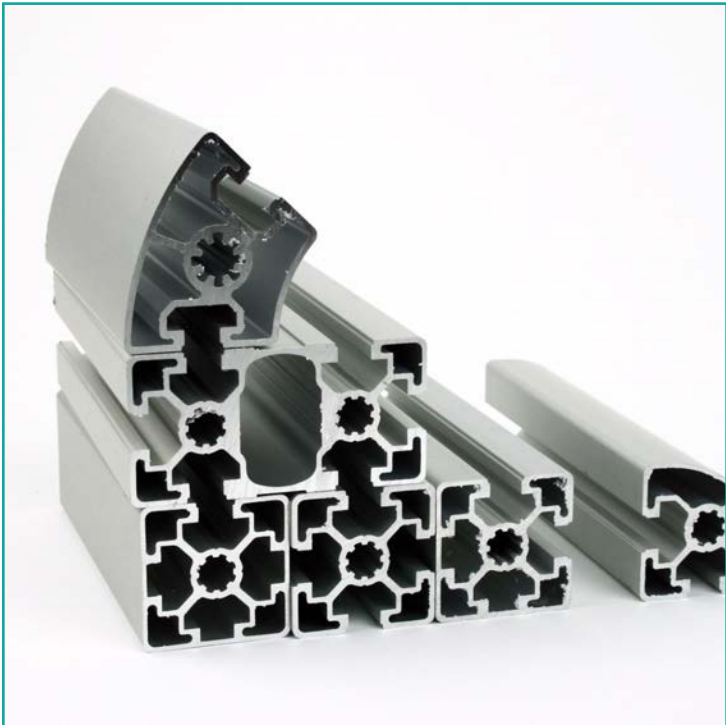
GLASS FACTORY



ALUMINIUM WORKSHOP



ALUMINIUM WORKSHOP



OUR OFFICES



TOP DESIGN FOR STEEL, ALUMINIUM & GLASS Environmental Policy

TOP DESIGN FOR STEEL, ALUMINIUM & GLASS. Provides construction engineering solutions; steel works, aluminum works and glass works, Commercial, Government and Private Clients.

The Company is committed to fully comply with all the relevant national laws on environment and statutory requirements as applicable to our scope of works.

This policy will be the basis of our Environmental Management System and shall provide a framework for setting our environmental objectives and targets. We shall identify all the Environmental aspects and significant impacts of our activities and aim at reducing and preventing pollution that are within our control.

The policy is applicable to all branches, divisions, sites and subcontractors. Our commitment to the environment is communicated to all employees and clients by prominent display of the policy on the website, project sites and offices, handbooks, memos and during induction training.

The Chairman together with other members of the management board, have the overall responsibility for Environment management, and will give priority to environment in all business issues, and will provide adequate resources. However, it is the responsibility of all managers, supervisors and workforce to understand their role in implementing this policy and comply with all requirements.

The management believes that effective management of environmental issues is fundamental to success, and is therefore committed to continuously improve our environmental performance through setting of objectives and top design, periodic audits, necessary training, encouraging new ideas, employee participation, coordination with customers and subcontractors and bi-annual management reviews.

This policy will be reviewed for adequacy and effectiveness during the bi-annual management reviews.

Mr. BAHA MAHMOUD AYASH

Chairman

Date: 18 December, 2019



TABLE OF CONTENTS:

1. Introduction
2. Authority and Responsibility of Personnel
 - 2.1. Organization
 - 2.2. Responsibilities
 - 2.3. Documentation and Drawings
 - 2.4. Product Record
 - 2.5. Receiving Warehouse and Storage
3. Quality Control Program
 - 3.1. Site Inspections
 - 3.2. Inspection and Test Plan
 - 3.3. Inspection and Tests
 - 3.4. Administration
 - 3.5. Product Identification and Traceability
4. Internal Follow-Up
5. Planning, Preparation & Management
6. Measuring and Test Equipment
7. Non-Conformity
8. Corrective and Preventive Actions

ANNEXURE:

- Annexure I - Inspection and Testing Plan
- Annexure II - QA/QC Forms
- Annexure III - Site Organizational Chart
- Annexure IV - Personnel CV's

1. INTRODUCTION

TOP DESIGN FOR STEEL, ALUMINIUM & GLASS recognizes that in today's competitive marketplace, effective quality systems are essential when providing cost effective services with total quality to our clients. The Management of top design Group is totally committed to provide Commercial & Industrial General Contracting, that comply fully with the specifications and expectations of our valued clients. Therefore, it is the policy of the management to adhere strictly the quality control program and to ensure that this program and the requirements of our customers are met on each and every project we execute.

Full authority for the implementation and administration of the quality controls described in this manual has been delegated to the General Manager, who is also the Quality Control Manager "QCM". The QCM has the responsibility and organizational freedom to identify quality control problems, stop work, recommend solutions and verify resolution of such problems. The QCM shall also have the responsibility of documenting the established Quality Assurance / Quality Control Programs in a manner that strives to comply with international standards of Quality Systems. The ultimate objective of this company's QA/QC program is to comply fully with the prevalent international standards.

Project Managers are responsible for their assigned project's QA/QC activities. They may delegate the performance of their assigned duties to qualified individuals, but they shall retain full responsibility for completing their projects in strict accordance with established quality control policies and the client's specifications.

The quality of all subcontractors and vendors shall be the joint responsibility of the QCM and the applicable Project Manager. All projects will be executed in a manner that emphasizes safety, quality, schedule and maximum cost effectiveness.

Any commitment, conflicts, or non-conformance issues not resolved using current established Quality Assurance / Quality Control Procedures shall be brought to the attention of the General Manager for final resolution.

With regards to the Client / Authorities, all the personnel are bound to pursue the continuing quality in their activities at work Site, within the guidelines of the Company's policy and directives.

The Quality Assurance Department, who directly reports to QCM, and is not conditioned by production or delivery problems, is responsible for monitoring, verifying and documenting the correct implementation of the Quality System.

QCM shall cooperate and coordinate with the manager / Client in all matters relating to the quality control procedures and all personnel directly involved in this project shall be continuously kept informed to the contractual requirement and work procedures.

The Quality Assurance Department, who directly reports to QCM, and is not conditioned by production or delivery problems, is responsible for monitoring, verifying and documenting the correct implementation of the Quality System.

Project Manager shall cooperate and coordinate with the Engineer / Client in all matters relating to the quality control procedures and all personnel directly involved in this project shall be continuously kept informed to the contractual requirement and work procedures.

2. AUTHORITY AND RESPONSIBILITY OF PERSONNEL

2.1 ORGANIZATION

- The QC Engineer shall report directly to the QCM. He is responsible for the implementation of the Quality Control Program for both **TOP DESIGN FOR STEEL, ALUMINIUM & GLASS** and its sub-contractors.
- The QC Engineer assists and advises the working team to ensure adherence to the drawings, specifications and procedures. The QC Engineer shall monitor from receipt of material, and works.

2.2 RESPONSIBILITY

All **TOP DESIGN FOR STEEL, ALUMINIUM & GLASS** personnel have the responsibility for the quality of their work. They are required to be able to relay all functions associated with quality to their seniors to ensure that the quality of the work is maintained fully in line with company's Quality Policy.

QUALITY CONTROL ENGINEER:

- ▶ He ensures the maintaining of quality standards during the construction period in accordance with the specifications ruling at the time of contract award.
- ▶ He ensures that proper and effective coordination is developed with sub-contractors and consultants in relation to Inspection and Quality Control procedures.
- ▶ He is directly involved with, and ultimately responsible for, those activities that directly affect the quality of the Works. Those activities are described below:
- ▶ To inspect the works and materials with respect to specifications, latest approved drawings and approved relevant documents.
- ▶ To carry out all inspections, witnessing, monitoring, surveillance, etc..., all as per the requirements of Inspection and Test Plan (ITP).
- ▶ To be vigilant and active on site and to pick-up deficiencies, faults, non-compliance, etc..., of any work on the job site, to report his finding immediately to the concerned personnel and initiate to rectify/correct the work as per the requirement of the project.
- ▶ To check and verify that the latest approved documents are being used at the work place on site. All drawings stamped "APPROVED" and "APPROVED AS NOTED" are at the work place and must be of latest version/revision. Other than "APPROVED" and "APPROVED AS NOTED", drawings shall be removed from the work place and shall be well identified.
- ▶ To check with the document control register the status of all-relevant documents and latest version / revision, for example, Shop drawings, Method Statement, ITP, Material Submittals, Procedures, etc.
- ▶ To liaise with the Client when required to carry out inspection and obtain approval as per ITP for relevant activity.
- ▶ To ensure "Safety" is practiced on site. Any safety hazard noticed shall be reported immediately to the Safety Officer and concerned personnel on site.
- ▶ To adequately use the "Inspection Request Form" and ensure that the results of the inspection are clearly indicated on the inspection request. These results shall be conveyed to all concerned without any delay.
- ▶ To ensure that all Inspection Reports are completed and immediately handed over to the Operation Manager.
- ▶ Any non-conformity observed/noticed on site shall immediately be reported to the concerned personnel for immediate rectification/correction. In case rectification /correction are not immediately possible, a "Non-Conformance Report" will be raised, and the "Non Conformance Log" updated.

PROJECT MANAGER:

- ▶ The Project Manager is responsible for ensuring that the work is performed in accordance with the contract specification and within the time and cost limits.
- ▶ He shall be responsible to keep all his personnel fully aware of the quality control principles and he shall provide all support to system on the project Quality Control Department.
- ▶ Responsible for the quality of work carried out by all site personnel under his control including sub-contractors and suppliers.
- ▶ To ensure that all the inspection and corrective actions requirements as instructed by the QA / QC Engineer is carried out by the construction personnel.

SITE ENGINEER:

- ▶ Control of technical issues - Review of technical submissions.
- ▶ Interpreting contract drawings and specifications and being familiar with all provisions of the contract and any revisions or amendments.
- ▶ Assisting the Project Manager to establish the relevant aspects of the schedule of quality control operations.
- ▶ Records and control of production documentation.
- ▶ Ensure that all staff under his control areas experienced and trained in their relevant disciplines.
- ▶ Responsible for the quality of work carried out on site.
- ▶ Responsible for the safety on site.

2.3 DOCUMENTATION AND DRAWINGS

- The QC Engineer receives copies of all drawings, specifications, material certificates, test and keeps record of full documentation.
- The QC Engineer also receives reports, material, samples, and drawings, submittals, submittal register and other relevant documentation on daily basis copies of all the deliveries.

- ▶ Quality records are divided into documents demonstrating:
- ▶ Efficiency of the Quality System (system records)
- ▶ Conformity with the quality required (product records)

THE DOCUMENTS MUST BE:

- ▶ Readable – easily retraceable
- ▶ Drawn up by skilled personnel, suitably qualified for the task performed.
- ▶ Provided with sufficient information capable of allowing a clear correlation between the document and the materials, services, products, manufacturers and activities it refers to.

TYPES OF DOCUMENTS:

The main types of documents are:

- ▶ Certificates / Lab tests (made by the Company or outside)
- ▶ Documents certifying the materials.
- ▶ Check forms foreseen by the Quality control plans.
- ▶ Non-Conformity reports.
- ▶ Suppliers' assessment reports.
- ▶ Reports / Contract reviewing reports.
- ▶ Reports / Company or suppliers inspection reports.
- ▶ Non-conformity registers.
- ▶ Product identification or re-traceability reports.
- ▶ Final or test inspection reports.
- ▶ Reports / Calibration certificates for controlling, measuring and testing devices.

2.4 PRODUCT RECORDS

The documents certifying the quality of the manufacturers relevant to the check performed during the working activities are defined in each case in the Quality Control Plan drawn up for that work and enclosed to the relevant Technical Specifications.

According to the type of work and in compliance with the project's requirements records covering the daily activity and the execution of pile are prepared.

In addition to the above documents and records, any extra quality requirement within our scope of work will be followed as detailed in Contractor standard package.

2.4 RECEIVING WAREHOUSING AND STORAGE

The QC Engineer inspects permanent materials received at the warehouse or on lay-down areas and ensures that these materials are properly identified, inspected for damage, and stored; he records and informs the Project Manager of any evidence of damage, defects, or non-conformance prior to the possible acceptance of the goods.

3. QUALITY CONTROL PROGRAM

- Site compliance with the Contract Specifications, the approved drawings and submittals, and with Method Statements, is monitored by the QC Engineer through inspections. Non-conformances are reported, and corrections checked through follow-up inspections.
- Tests are carried out, on regular or irregular basis, in agreement with the requirements of the Contract and as per the approved ITP. An Improvement Action Report is opened and followed up when the test results are not satisfactory.

3.1. SITE INSPECTION

- Quality Control covers all construction operations. The controls include as a minimum at least three phases of inspection for all definable features of work. They are as follows:
 - A “Preparatory Inspection” is performed prior to the beginning of the work on all the definable features of the project. It includes a review of the contract requirements and a check to assure that all materials and/or equipment have been submitted and approved.
 - Then “Initials Inspections” are performed as soon as a representative portion of the particular feature of the work has been accomplished. Inspection includes examination of the quality of workmanship; a review of control testing for compliance with contract requirements; a control on non-use of defective or damaged materials; a check on dimensional requirements.
 - Finally, “Follow-up Inspections” are performed to assure continuing compliance with contract requirements. These inspections include control testing until the completion of a particular feature or work.
 - Deficiencies are reported to the Operation Manager, and the corrective actions are recorded. The QC Engineer will ensure that the incorporated items into the works are free from unresolved deficiencies.

3.2. INSPECTION AND TEST PLAN (ITP)

- The QC Engineer must prepare and develop Inspection and Test Plan (ITP) along with records to be used for major activities on the Project, including for those of the various Sub-contractors.
- The QC Engineer must ensure that effective Inspection /Testing are carried out as per the approved documents and this inclusive for all the Sub-contractors on the Project.

This will be an ongoing activity and each procedure for a new activity will have to include the necessary testing. For example, in the concrete works, tests as slump, fresh concrete temperature, etc.... will have to be added to the ITP.

3.3. INSPECTION AND TESTS

Non-compliance with inspection or test requirements is documented. The action proposed to correct non-compliance may be:

a. Accept-as-is

The item has been evaluated to have no impact on the function of the plant. Engineering justification for an accept-as-is evaluation is required.

b Accept with amendments (Repair)

The item will be able to function in its intended manner after additional operations outside of those required for standard construction have been performed. For these items, Standard Repair Procedures may be employed.

c. Rework / Replace

The item is torn down or dismantled to the extent necessary and reconstructed in compliance with the original design requirements.

The Project Manager will be consulted for “Accept-as-is” and “Accept with Amendments” dispositions to non-complying items.

3.4. ADMINISTRATION

All project related documents are received and any changes are approved by an authorized person in coordination with the originator of the documents. The changes are analyzed, recorded and implemented.

All such documents are reference by the project number and title to ensure full identification and traceability and records are maintained of a document control activities.

3.5. PRODUCT IDENTIFICATION AND TRACEABILITY

The product identification and traceability of materials used in the process is limited to identification of various construction materials and the location where they have been used through documented records only. Material samples submittals will be identified using tags, stamps, labels or by records traceable to an item.

All other items will be identified by the Contract No. and Purchase order No. during the process of receipt and storage. This will be supplemented by relevant quality documents such as test certificates, mill certificates, and reference standards, etc.

4. INTERNAL FOLLOW-UP

The program of internal follow-up covers all the activities affecting the quality of the products and the effectiveness of the quality system in the various productive phases.

- Control of technical documents
- Production
- Control of instruments
- Control of non-conformities
- Control of documents relating to the quality of the system
- Control of documents relating to the quality of the product
- Frequency shall be once in a period of two week

5. PLANNING, PREPARATION & MANAGEMENT

Quality follow-up are carried out to verify compliance of quality activities with the company and project quality system and to ensure whether the planned arrangements are implemented effectively. The QA / QC Engineer would be taking part of quality auditing and he would coordinate all arrangements and liaising for such auditing.

Any non-conformity is documented and their cause investigated and they would be recorded and reported, and corrective actions are proposed to the Engineer for review and approval.

6. MEASURING AND TEST EQUIPMENT

Testing equipment shall be calibrated to relevant specifications. Only those instruments having current and valid calibration certificate or identification will be used for inspection, test and measurement purposes.

7. NON-CONFORMITY

Non-conformance reports issued by QA/QC Engineer to the site shall be copied to The Client's QA/QC Department and to the Engineer.

QA / QC Engineer shall investigate the causes of non-confirming item and obtain corrective action-proposals from project management team. The effective will be closely monitored by the QA/QC Engineer until close out of the NCR's.

8. CORRECTIVE AND PREVENTIVE ACTIONS

This item shall be strictly followed in accordance with the Client's Quality Management Plan. Any non-conformance is identified and corrected in a manner such that non-conforming material or work is not inadvertently incorporated into the completed works. The roots caused of such events are established and corrective action taken to prevent their recurrence. Preventive action is taken to identify and minimize the risk of any possible causes of such events occurring in the future.

REGISTRATION CERTIFICATE



Issue Date: 04 June 2025

We hereby register the Sub Contractor: TOP DESIGN FOR STEEL ALUMINUM AND GLASS

ADCE Vendor Code: v0004025

With the following Civil Work Service(s): Aluminum, Metal & Glass.

Remarks:

Theodore Hakim

Registration Review Committee Signature 1



Roger Zehil

Registration Review Committee Signature 2

Disclaimer:
1) This prequalification approval does not absolve the sub-contractor from getting a 'project specific approval' by the project consultant and by ADCE. Whenever a pre-qualified sub-contractor applies for a specific project, they should go through the sub-contractor submission process where they should prove resource allocation, financing position and proper engineering staff. The issuing of this certificate does not confer any authority upon the Sub Contractor.
2) This certificate is valid for one year from issue date.



شهادة التسجيل في ضريبة القيمة المضافة
أصدرت بموجب الصلاحية الممنوحة بموجب المادة (4) من المرسوم بقانون رقم (13) لسنة 2016 بشأن إنشاء الهيئة الاتحادية للضرائب

Certificate of Registration for Value Added Tax in the United Arab Emirates
Issued under the authority allocated by Art. 4 of the Federal Decree-Law No. 13 of 2016

The Federal Tax Authority certifies that the entity below is a registered person for Value Added Tax in the UAE
تشهد الهيئة الاتحادية للضرائب أن الجهة التالية مسجلة لضريبة القيمة المضافة في الإمارات العربية المتحدة

Tax Registration Number 104135328300003 رقم التسجيل الضريبي

Legal Name of Entity (Arabic) توب ديزاين للحديد والألمنيوم والزجاج - شركة الشخص الواحد ذ م م الاسم القانوني للكيان (باللغة العربية)

Legal Name of Entity (English) TOP DESIGN FOR STEEL ALUMINUM AND GLASS - SOLE PROPRIETORSHIP L.L.C الاسم القانوني للكيان (باللغة الانجليزية)

The Registered Address and Contact Number 99723, السيد فلاح هادي علي الاحبابي, 15, الصناعية, العين, 99723, Abu Dhabi +971501633044 العنوان المسجل ورقم التواصل

Effective Registration Date 01/11/2023 تاريخ التسجيل الفعلي

First VAT Return Period 01/11/2023 - 31/01/2024 فترة أول إقرار لضريبة القيمة المضافة

VAT Return due date 28/02/2024 تاريخ استحقاق الإقرار الضريبي لضريبة القيمة المضافة

Start and end dates of Tax periods 1st Feb to 30th Apr, 1st May to 31st Jul, 1st Aug to 31st Oct, 1st Nov to 31st Jan تواريخ بدء وانتهاء الفترات الضريبية

List of sole proprietorships/sole establishments and branches under the registered taxable person: قائمة الملكية الفردية/المؤسسات الفردية والفروع المندرجة ضمن التسجيل الضريبي:

Legal Name	License Issuing Authority	License Number/رقم الرخصة	جهة الترخيص	الاسم القانوني
------------	---------------------------	---------------------------	-------------	----------------

يرجى التأكد من صحة تفاصيل الشهادة. يجب إبلاغ الهيئة الاتحادية للضرائب في حال تغيير الأسس التي حصلت فيها على رقم التسجيل الضريبي الخاص بك.*

*Please check that the details on this certificate are correct. You must inform the Federal Tax Authority of any change on the basis of which you obtained your Tax Registration Number.

Date of Issue

11/10/2023

تاريخ الاصدار





	Legal Name	License Issuing Authority	License Number/رقم الرخصة	جهة الترخيص	الاسم القانوني
1	TOP DESIGN FOR STEEL ALUMINUM AND GLASS - SOLE PROPRIETORSHIP L.L.C	Abu Dhabi Department of Economic Development	CN-1132078	دائرة التنمية الاقتصادية في أبوظبي	توب ديزاين للحديد والألمنيوم والزجاج - شركة الشخص الواحد ذ م م
2	TOP DESIGN FOR STEEL ALUMINUM AND GLASS - SOLE PROPRIETORSHIP L.L.C. - BRANCH	Abu Dhabi Department of Economic Development	CN-4564575	دائرة التنمية الاقتصادية في أبوظبي	توب ديزاين للحديد والألمنيوم والزجاج - شركة الشخص الواحد ذ م م - فرع

يرجى التأكد من صحة تفاصيل الشهادة. يجب إبلاغ الهيئة الاتحادية للضرائب في حال تغيير الأسس التي حصلت فيها على رقم التسجيل الضريبي الخاص بك.*

*Please check that the details on this certificate are correct. You must inform the Federal Tax Authority of any change on the basis of which you obtained your Tax Registration Number.

Date of Issue

11/10/2023

تاريخ الاصدار



رخصة أبوظبي الاقتصادية Abu Dhabi Economic Licence

تفاصيل الرخصة

Licence Details

Licence Type	Crafts	حرفية	نوع الرخصة
Licence Category	Normal	عادية	فئة الرخصة
Licence No.	CN-1132078		رقم الرخصة
Unified Registration No.	101-2021-100039200		رقم التسجيل الموحد
Unified Licence No.	501-2005-100042439		رقم الرخصة الموحد
Establishment Date	26/11/2005		تاريخ التأسيس
Issuance Date	05/10/2025		تاريخ الإصدار
Expiry Date	23/10/2026		تاريخ الإنتهاء
Legal Form	Limited Liability Company - Sole Proprietorship Company	شركة ذات مسؤولية محدودة - شركة الشخص الواحد	الشكل القانوني
Trade Name	TOP DESIGN FOR STEEL ALUMINUM AND GLASS - SOLE PROPRIETORSHIP L.L.C.	توب ديزاين للحديد والألمنيوم والزجاج - شركة الشخص الواحد ذ م م	الإسم التجاري

Ownership and Representatives

الملكية والممثلين

ممثل عن Representative of	الدور/المنصب Role/Position	الجنسية Nationality	الاسم Name
	مالك Owner	سوريا Syria	بهاء محمود عياش BAHAA MAHMOUD AYASH

Licence Activities

الأنشطة المرخصة

- Aluminium and Glass Installation Workshop	2592011.2	- ورشة لت تركيبات الألمنيوم والزجاج
- Smithery and Welding Workshop	2592011.1	- ورشة حدادة ولحام

Address

العنوان

Official Email	البريد الإلكتروني الرسمي
Official Mobile	رقم التواصل الرسمي
Address	العين, المنطقة الصناعية, الخامس عشر, السيد/فلاح هادي علي الاحبابي/والخرون

Additional Information

معلومات إضافية

ADCCI No	208444	رقم عضوية الغرفة
MOHRE Establishment Card No.	558791	بطاقة المنشأة - وزارة الموارد البشرية والتوطين
ICP Establishment Card No.		بطاقة المنشأة - الهيئة الاتحادية للهوية والجنسية



رخصة أبوظبي الاقتصادية Abu Dhabi Economic Licence

تفاصيل الرخصة

Licence Details

Licence Type	Business	تجارية	نوع الرخصة
Licence Category	Normal	عادية	فئة الرخصة
Licence No.	CN-1742051		رقم الرخصة
Unified Registration No.	101-2021-100039189		رقم التسجيل الموحد
Unified Licence No.	501-2014-100106950		رقم الرخصة الموحد
Establishment Date	28/04/2014		تاريخ التأسيس
Issuance Date	15/07/2025		تاريخ الإصدار
Expiry Date	31/07/2026		تاريخ الإنتهاء
Legal Form	Limited Liability Company - Sole Proprietorship Company	شركة ذات مسؤولية محدودة - شركة الشخص الواحد	الشكل القانوني
Trade Name	TOP DESIGN BUILDING MATERIALS - SOLE PROPRIETORSHIP L.L.C.	توب ديزاين لمواد البناء - شركة الشخص الواحد ذ م م	الإسم التجاري

Ownership and Representatives

الملكية والممثلين

ممثل عن Representative of	الدور\المُنصب Role/Position	الجنسية Nationality	الإسم Name
	مالك Owner	سوريا Syria	بهاء محمود عياش BAHAA MAHMOUD AYASH

Licence Activities

الأنشطة المرخصة

- Retail Sale of Buildings Material	4752034	- بيع مواد البناء - بالتجزئة
-------------------------------------	---------	------------------------------

Address

العنوان

Official Email	البريد الإلكتروني الرسمي
Official Mobile	رقم التواصل الرسمي
Address	العنوان العين, صناعية العين, سهيل حمد محمد العامري

Additional Information

معلومات إضافية

ADCCI No	324871	رقم عضوية الغرفة
MOHRE Establishment Card No.		بطاقة المنشأة - وزارة الموارد البشرية والتوطين
ICP Establishment Card No.		بطاقة المنشأة - الهيئة الاتحادية للهوية والجنسية





CERTIFICATE

This is to Certify that the
Quality Management System
of

TOP DESIGN FOR STEEL ALUMINUM AND GLASS

P.O. Box 99723, Al Sanaiya, Al Ain, Uae

has been found to comply with

ISO 9001:2015

This certificate is applicable to the following scope

**Steel & Cast Aluminum Manufacturing & Installation, Glass Tempering
Manufacturing & Installation, Aluminum Manufacturing & Installation
Building Material Steel Trading.**

Certificate No :: I-QSC201902086

Date of initial registration	27, February, 2019
Surveillance audit on or before	27, January, 2020
Certificate expiry	26, February, 2020
Recertification Due	26, February, 2022

Authorized Signatory
BQC ASSESSMENT PRIVATE LIMITED
(formerly BQC Certifications)

Website : www.bqccert.com, E-mail : info@bqccert.com

Accredited by International Accreditation Service

The validity of this certificate can be verified at www.bqccert.com or through info@bqccert.com. This certificate is the property of BQC Certifications, and must be returned on request. Accreditation details are available with IAS, (International Accreditation Services) Inc. USA at www.iasonline.org



CERTIFICATE



This is to Certify that the
Occupational Health & Safety Management System
of

TOP DESIGN FOR STEEL ALUMINUM AND GLASS

P.O. Box 99723, Al Sanaiya, Al Ain, Uae

has been found to comply with

OHSAS 18001:2007

This certificate is applicable to the following scope

Steel & Cast Aluminum Manufacturing & Installation, Glass Tempering
Manufacturing & Installation, Aluminum Manufacturing & Installation
Building Material Steel Trading.

Certificate No :: I-OSC201902026

Date of initial registration	27, February, 2019
Surveillance audit on or before	27, January, 2020
Certificate expiry	26, February , 2020
Recertification Due	26, February , 2022

A handwritten signature in black ink, located below the table of dates.

Authorized Signatory
BQC ASSESSMENT PRIVATE LIMITED
(formerly BQC Certifications)

Website : www.bqccert.com, E-mail : info@bqccert.com
Accredited by International Accreditation Service

The validity of this certificate can be verified at www.bqccert.com or through info@bqccert.com. This certificate is the property of BQC Certifications, and must be returned on request. Accreditation details are available with IAS, (International Accreditation Services) Inc. USA at www.iasonline.org



CERTIFICATE



This is to Certify that the
Environmental Management System
of

TOP DESIGN FOR STEEL ALUMINUM AND GLASS

P.O. Box 99723, Al Sanaiya, Al Ain, Uae

has been found to comply with

ISO 14001:2015

This certificate is applicable to the following scope

Steel & Cast Aluminum Manufacturing & Installation, Glass Tempering
Manufacturing & Installation, Aluminum Manufacturing & Installation
Building Material Steel Trading.

Certificate No :: I-ESC201902025

Date of initial registration	27, February, 2019
Surveillance audit on or before	27, January, 2020
Certificate expiry	26, February , 2020
Recertification Due	26, February , 2022

BQC ASSESSMENT PRIVATE LIMITED
(formerly BQC Certifications)

Website : www.bqccert.com, E-mail : info@bqccert.com

Accredited by International Accreditation Service

The validity of this certificate can be verified at www.bqccert.com or through info@bqccert.com. This certificate is the property of BQC Certifications, and must be returned on request. Accreditation details are available with IAS, (International Accreditation Services) Inc. USA at www.iasonline.org



Top Design Group
steel, glass & aluminum



+971 3 722 9495



+9715 0 1633044 | +9715 5 4030309



P.O.BOX: 99723 - AL AIN - U.A.E



topaluminiumglass@gmail.com



Top_design_alain



www.topdesign.ae